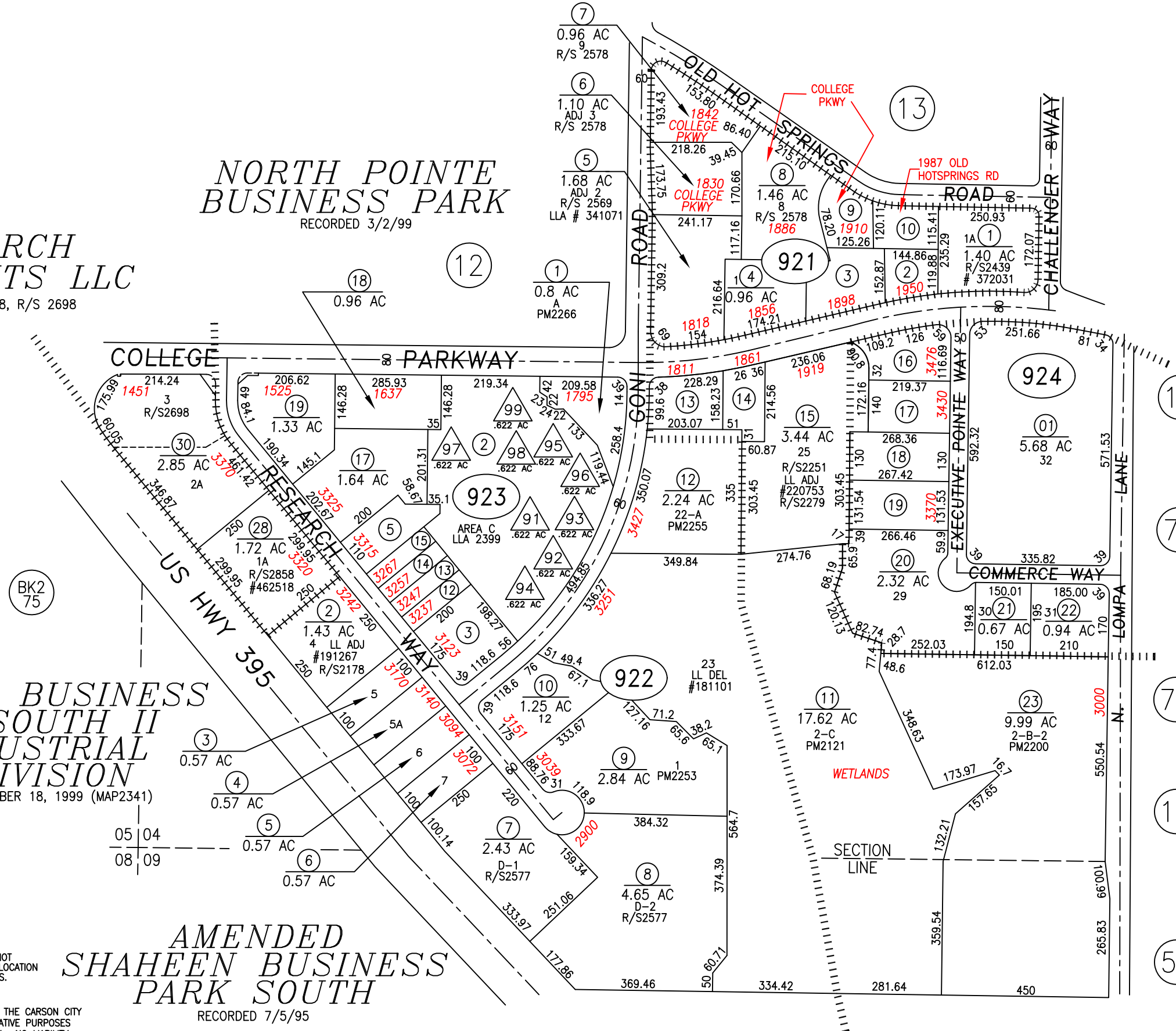


RESEARCH INVESTMENTS LLC
RECORDED 10/13/2008, R/S 2698

NORTH POINTE BUSINESS PARK
RECORDED 3/2/99

SHAHEEN BUSINESS PARK SOUTH II AN INDUSTRIAL SUBDIVISION
RECORDED NOVEMBER 18, 1999 (MAP2341)

AMENDED SHAHEEN BUSINESS PARK SOUTH
RECORDED 7/5/95

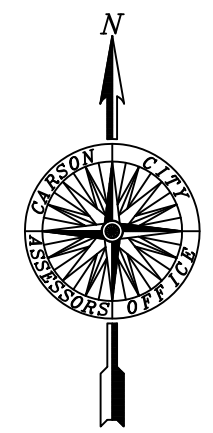


PARCEL NO	LOT & DOC #	AREA
BLOCK 921		
008-921-02	5 R/S2445	0.46 AC
008-921-03	4 R/S2445	0.81 AC
008-921-09	7 R/S2445	0.57 AC
008-921-10	6 R/S2445	0.44 AC

BLOCK 922		
008-922-13	23 PM2255	0.67 AC
008-922-14	24 PM2255	0.48 AC
008-922-16	26 R/S2279	0.72 AC
008-922-17	27 R/S2279	0.70 AC
008-922-18	28A R/S2289	0.80 AC
008-922-19	28B R/S2289	0.81 AC

008-922-30	2A & 3 R/S2698 LLD #464602 R/W DED #466870	2.85 AC
------------	--	---------

BLOCK 923		
008-923-03	SPLIT BY DEED #188899	0.91 AC
008-923-05	15 R/S2468 BLA 2476	0.58 AC
008-923-12	D R/S2658	10,050 SQFT
008-923-13	C R/S2658	9,950 SQFT
008-923-14	B R/S2658	9,950 SQFT
008-923-15	A R/S2658	10,050 SQFT
008-923-17	B R/S2755	1.63 AC
008-923-18	A R/S2755	0.96 AC
008-923-19	ADJ 17 R/S2624 #359936 R/W DED #466870	1.33 AC



SCALE: 1" = 300'
REVISED: 11/14/2016

△ BUILDING ON LEASED LAND

UPDATED PARCEL 008-923-19 NO CHANGES

NOTE:
SOME PARCELS DELINEATED HEREON MAY NOT BE PRESENTED IN TRUE SIZE, SHAPE, OR LOCATION DUE TO DISCREPANCIES BETWEEN LOT LINES.

CARSON CITY, NEVADA
THIS MAP IS PREPARED FOR THE USE OF THE CARSON CITY ASSESSOR FOR ASSESSMENT AND ILLUSTRATIVE PURPOSES ONLY. IT DOES NOT REPRESENT A SURVEY. NO LIABILITY IS ASSUMED AS TO THE SUFFICIENCY OR ACCURACY OF THE DATA DELINEATED HEREON. YOU CAN VIEW AND PRINT OUR MAPS AT NO CHARGE FROM OUR WEBSITE AT: <http://ccapps.org/publicgis/>