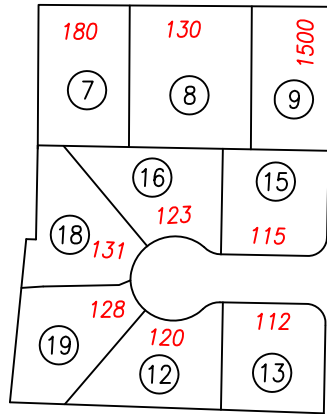


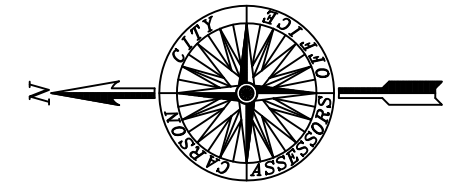
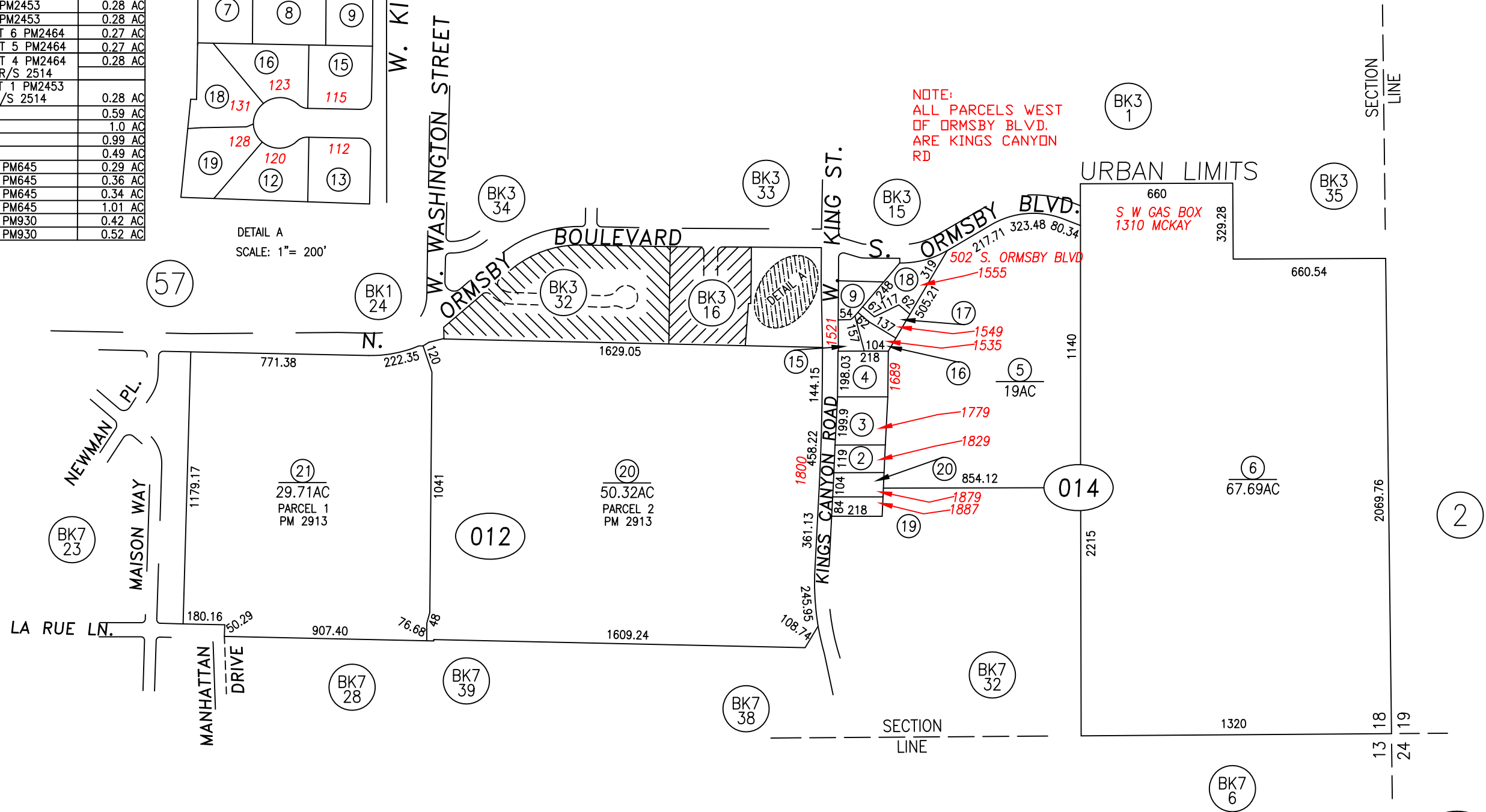
APN	DESCRIPTION	ACREAGE
9-012-07	C PM626	0.33 AC
9-012-08	B PM626	0.44 AC
9-012-09	A PM626	0.28 AC
9-012-12	2 PM2453	0.28 AC
9-012-13	3 PM2453	0.28 AC
9-012-15	LOT 6 PM2464	0.27 AC
9-012-16	LOT 5 PM2464	0.27 AC
9-012-18	LOT 4 PM2464 R/S 2514	0.28 AC
9-012-19	LOT 1 PM2453 R/S 2514	0.28 AC
9-014-02		0.59 AC
9-014-03		1.0 AC
9-014-04		0.99 AC
9-014-09		0.49 AC
9-014-15	A PM645	0.29 AC
9-014-16	B PM645	0.36 AC
9-014-17	C PM645	0.34 AC
9-014-18	D PM645	1.01 AC
9-014-19	B PM930	0.42 AC
9-014-20	A PM930	0.52 AC

N. ORMSBY BLVD.
S. ORMSBY BLVD.
W. KING ST.W. WASHINGTON STREET



DETAIL A
SCALE: 1" = 200'

NOTE:
ALL PARCELS WEST
OF ORMSBY BLVD.
ARE KINGS CANYON
RD



SCALE: 1" = 500'
REVISED: 05/31/2017

PARCEL 9-012-02 IS NOW 009-012-20 & 21 PM #2913 #475227

NOTE
SOME PARCELS DELINEATED HEREON MAY NOT
BE PRESENTED IN TRUE SIZE, SHAPE, OR LOCATION
DUE TO DISCREPANCIES BETWEEN LOT LINES.
CARSON CITY, NEVADA
THIS MAP IS PREPARED FOR THE USE OF THE CARSON CITY
ASSESSOR FOR ASSESSMENT AND ILLUSTRATIVE PURPOSES
ONLY, IT DOES NOT REPRESENT A SURVEY. NO LIABILITY
IS ASSUMED AS TO THE SUFFICIENCY OR ACCURACY OF THE
DATA DELINEATED HEREON. YOU CAN VIEW AND PRINT OUR
MAPS AT NO CHARGE FROM OUR WEBSITE AT: <http://ccapps.org/publicgis/>