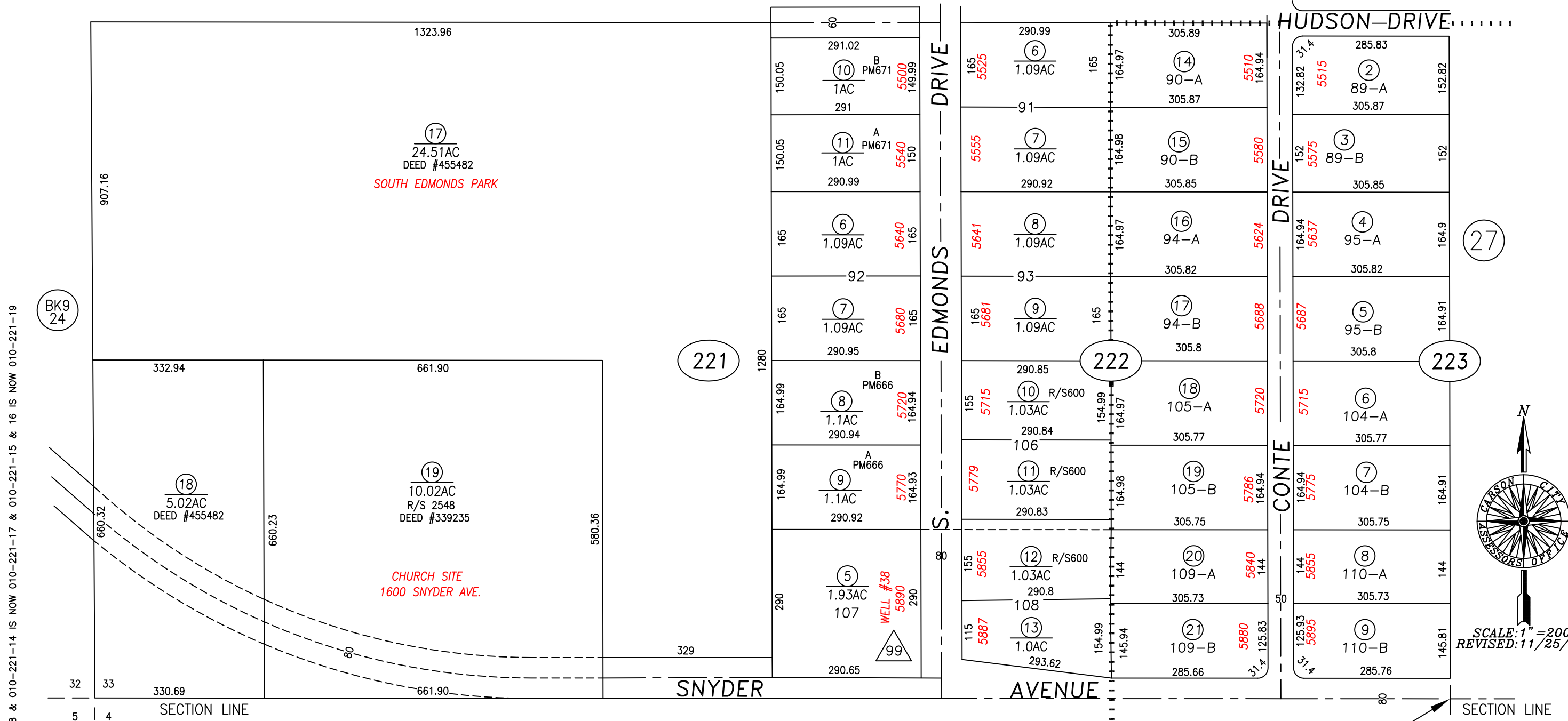


(21)



(221)

(222)

(223)

(27)

(28)

GOVERNMENT SURVEY MAP #304

△ BUILDING ON LEASED LAND

PORTION OF PARCEL MAP 608 FOR STOKES & SHAW

PARCELS 010-221-13 IS NOW 010-221-18 & 010-221-14 IS NOW 010-221-17 & 010-221-15 & 16 IS NOW 010-221-19

NOTE
 SOME PARCELS DELINEATED HEREON MAY NOT BE PRESENTED IN TRUE SIZE, SHAPE, OR LOCATION DUE TO DISCREPANCIES BETWEEN LOT LINES.

CARSON CITY, NEVADA
 THIS MAP IS PREPARED FOR THE USE OF THE CARSON CITY ASSESSOR FOR ASSESSMENT AND ILLUSTRATIVE PURPOSES ONLY, IT DOES NOT REPRESENT A SURVEY. NO LIABILITY IS ASSUMED AS TO THE SUFFICIENCY OR ACCURACY OF THE DATA DELINEATED HEREON. YOU CAN VIEW AND PRINT OUR MAPS AT NO CHARGE FROM OUR WEBSITE AT: <http://ccapps.org/publicgis/>

SCALE: 1" = 200'
REVISED: 11/25/2015