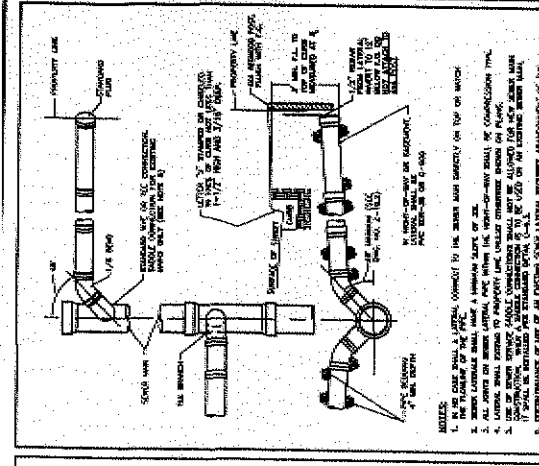


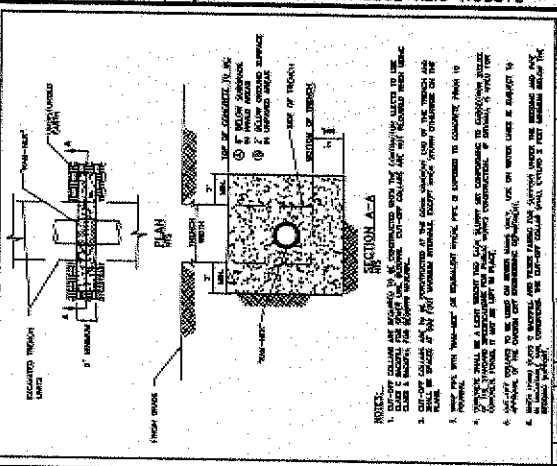
PRELIMINARY  
 09/20/08

REV.	DATE	DESCRIPTION	BY	APP'D

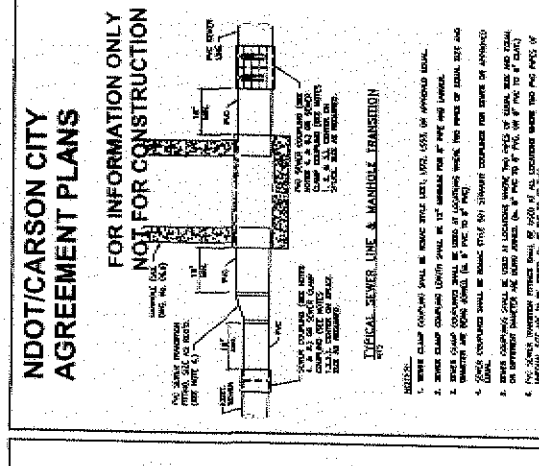
CARSON CITY FREEMAN PHASE 2A  
 UTILITY RELOCATIONS  
 E. 17TH ST. FREEMAN CANYON, LINCOLN CITY, NEVADA  
 PROJECT NO. 08-09-010  
 TYPICAL CONSTRUCTION DETAILS



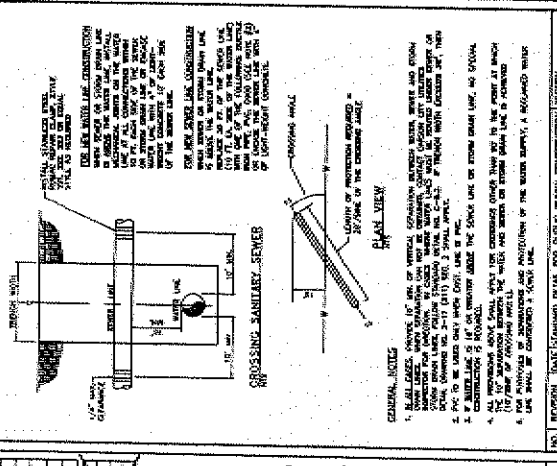
**SEWER LATERAL**  
 SECTION A-A  
 NOTES:  
 1. ALL SEWER LATERALS SHALL BE INSTALLED AT A MINIMUM 18" DEPTH.  
 2. ALL SEWER LATERALS SHALL BE INSTALLED WITH A MINIMUM 1% SLOPE.  
 3. ALL SEWER LATERALS SHALL BE INSTALLED WITH A MINIMUM 12" COVER.  
 4. ALL SEWER LATERALS SHALL BE INSTALLED WITH A MINIMUM 12" DIA. MANHOLE.  
 5. ALL SEWER LATERALS SHALL BE INSTALLED WITH A MINIMUM 12" DIA. PIPE.  
 6. ALL SEWER LATERALS SHALL BE INSTALLED WITH A MINIMUM 12" DIA. CONNECTION.  
 7. ALL SEWER LATERALS SHALL BE INSTALLED WITH A MINIMUM 12" DIA. MANHOLE.  
 8. ALL SEWER LATERALS SHALL BE INSTALLED WITH A MINIMUM 12" DIA. PIPE.  
 9. ALL SEWER LATERALS SHALL BE INSTALLED WITH A MINIMUM 12" DIA. CONNECTION.  
 10. ALL SEWER LATERALS SHALL BE INSTALLED WITH A MINIMUM 12" DIA. MANHOLE.



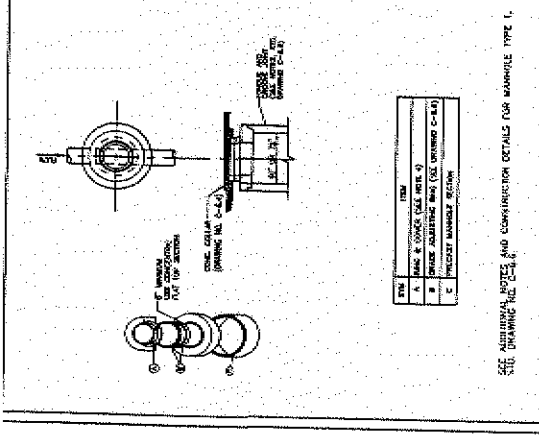
**SEWER TRANSITIONS**  
 SECTION A-A  
 NOTES:  
 1. ALL SEWER TRANSITIONS SHALL BE INSTALLED AT A MINIMUM 18" DEPTH.  
 2. ALL SEWER TRANSITIONS SHALL BE INSTALLED WITH A MINIMUM 1% SLOPE.  
 3. ALL SEWER TRANSITIONS SHALL BE INSTALLED WITH A MINIMUM 12" COVER.  
 4. ALL SEWER TRANSITIONS SHALL BE INSTALLED WITH A MINIMUM 12" DIA. MANHOLE.  
 5. ALL SEWER TRANSITIONS SHALL BE INSTALLED WITH A MINIMUM 12" DIA. PIPE.  
 6. ALL SEWER TRANSITIONS SHALL BE INSTALLED WITH A MINIMUM 12" DIA. CONNECTION.  
 7. ALL SEWER TRANSITIONS SHALL BE INSTALLED WITH A MINIMUM 12" DIA. MANHOLE.  
 8. ALL SEWER TRANSITIONS SHALL BE INSTALLED WITH A MINIMUM 12" DIA. PIPE.  
 9. ALL SEWER TRANSITIONS SHALL BE INSTALLED WITH A MINIMUM 12" DIA. CONNECTION.  
 10. ALL SEWER TRANSITIONS SHALL BE INSTALLED WITH A MINIMUM 12" DIA. MANHOLE.



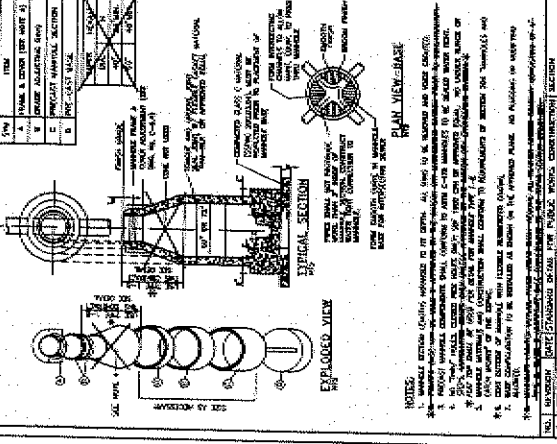
**MANHOLE TRANSITIONS**  
 SECTION A-A  
 NOTES:  
 1. ALL MANHOLE TRANSITIONS SHALL BE INSTALLED AT A MINIMUM 18" DEPTH.  
 2. ALL MANHOLE TRANSITIONS SHALL BE INSTALLED WITH A MINIMUM 1% SLOPE.  
 3. ALL MANHOLE TRANSITIONS SHALL BE INSTALLED WITH A MINIMUM 12" COVER.  
 4. ALL MANHOLE TRANSITIONS SHALL BE INSTALLED WITH A MINIMUM 12" DIA. MANHOLE.  
 5. ALL MANHOLE TRANSITIONS SHALL BE INSTALLED WITH A MINIMUM 12" DIA. PIPE.  
 6. ALL MANHOLE TRANSITIONS SHALL BE INSTALLED WITH A MINIMUM 12" DIA. CONNECTION.  
 7. ALL MANHOLE TRANSITIONS SHALL BE INSTALLED WITH A MINIMUM 12" DIA. MANHOLE.  
 8. ALL MANHOLE TRANSITIONS SHALL BE INSTALLED WITH A MINIMUM 12" DIA. PIPE.  
 9. ALL MANHOLE TRANSITIONS SHALL BE INSTALLED WITH A MINIMUM 12" DIA. CONNECTION.  
 10. ALL MANHOLE TRANSITIONS SHALL BE INSTALLED WITH A MINIMUM 12" DIA. MANHOLE.



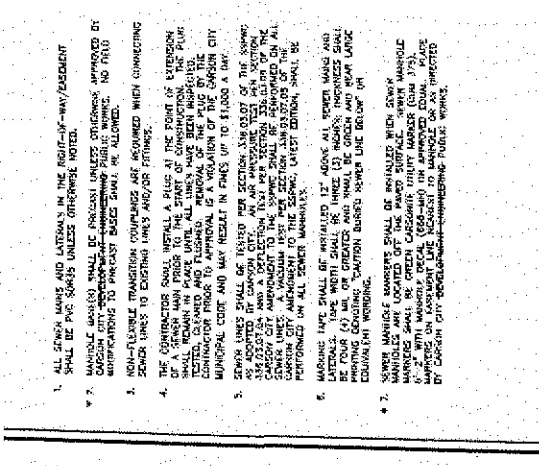
**SANITARY SEWER AND STORM DRAIN CROSSINGS**  
 SECTION A-A  
 NOTES:  
 1. ALL SANITARY SEWER AND STORM DRAIN CROSSINGS SHALL BE INSTALLED AT A MINIMUM 18" DEPTH.  
 2. ALL SANITARY SEWER AND STORM DRAIN CROSSINGS SHALL BE INSTALLED WITH A MINIMUM 1% SLOPE.  
 3. ALL SANITARY SEWER AND STORM DRAIN CROSSINGS SHALL BE INSTALLED WITH A MINIMUM 12" COVER.  
 4. ALL SANITARY SEWER AND STORM DRAIN CROSSINGS SHALL BE INSTALLED WITH A MINIMUM 12" DIA. MANHOLE.  
 5. ALL SANITARY SEWER AND STORM DRAIN CROSSINGS SHALL BE INSTALLED WITH A MINIMUM 12" DIA. PIPE.  
 6. ALL SANITARY SEWER AND STORM DRAIN CROSSINGS SHALL BE INSTALLED WITH A MINIMUM 12" DIA. CONNECTION.  
 7. ALL SANITARY SEWER AND STORM DRAIN CROSSINGS SHALL BE INSTALLED WITH A MINIMUM 12" DIA. MANHOLE.  
 8. ALL SANITARY SEWER AND STORM DRAIN CROSSINGS SHALL BE INSTALLED WITH A MINIMUM 12" DIA. PIPE.  
 9. ALL SANITARY SEWER AND STORM DRAIN CROSSINGS SHALL BE INSTALLED WITH A MINIMUM 12" DIA. CONNECTION.  
 10. ALL SANITARY SEWER AND STORM DRAIN CROSSINGS SHALL BE INSTALLED WITH A MINIMUM 12" DIA. MANHOLE.



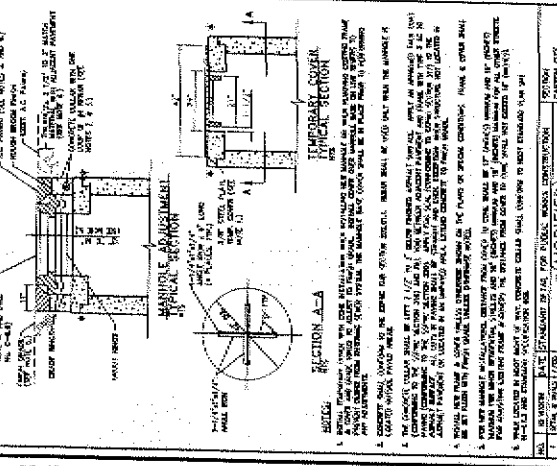
**FLAT TOP MANHOLE TYPE 1-B TOP**  
 SECTION A-A  
 NOTES:  
 1. ALL FLAT TOP MANHOLES SHALL BE INSTALLED AT A MINIMUM 18" DEPTH.  
 2. ALL FLAT TOP MANHOLES SHALL BE INSTALLED WITH A MINIMUM 1% SLOPE.  
 3. ALL FLAT TOP MANHOLES SHALL BE INSTALLED WITH A MINIMUM 12" COVER.  
 4. ALL FLAT TOP MANHOLES SHALL BE INSTALLED WITH A MINIMUM 12" DIA. MANHOLE.  
 5. ALL FLAT TOP MANHOLES SHALL BE INSTALLED WITH A MINIMUM 12" DIA. PIPE.  
 6. ALL FLAT TOP MANHOLES SHALL BE INSTALLED WITH A MINIMUM 12" DIA. CONNECTION.  
 7. ALL FLAT TOP MANHOLES SHALL BE INSTALLED WITH A MINIMUM 12" DIA. MANHOLE.  
 8. ALL FLAT TOP MANHOLES SHALL BE INSTALLED WITH A MINIMUM 12" DIA. PIPE.  
 9. ALL FLAT TOP MANHOLES SHALL BE INSTALLED WITH A MINIMUM 12" DIA. CONNECTION.  
 10. ALL FLAT TOP MANHOLES SHALL BE INSTALLED WITH A MINIMUM 12" DIA. MANHOLE.



**MANHOLE FRAME AND COVER ADJUSTMENT**  
 SECTION A-A  
 NOTES:  
 1. ALL MANHOLE FRAME AND COVER ADJUSTMENTS SHALL BE INSTALLED AT A MINIMUM 18" DEPTH.  
 2. ALL MANHOLE FRAME AND COVER ADJUSTMENTS SHALL BE INSTALLED WITH A MINIMUM 1% SLOPE.  
 3. ALL MANHOLE FRAME AND COVER ADJUSTMENTS SHALL BE INSTALLED WITH A MINIMUM 12" COVER.  
 4. ALL MANHOLE FRAME AND COVER ADJUSTMENTS SHALL BE INSTALLED WITH A MINIMUM 12" DIA. MANHOLE.  
 5. ALL MANHOLE FRAME AND COVER ADJUSTMENTS SHALL BE INSTALLED WITH A MINIMUM 12" DIA. PIPE.  
 6. ALL MANHOLE FRAME AND COVER ADJUSTMENTS SHALL BE INSTALLED WITH A MINIMUM 12" DIA. CONNECTION.  
 7. ALL MANHOLE FRAME AND COVER ADJUSTMENTS SHALL BE INSTALLED WITH A MINIMUM 12" DIA. MANHOLE.  
 8. ALL MANHOLE FRAME AND COVER ADJUSTMENTS SHALL BE INSTALLED WITH A MINIMUM 12" DIA. PIPE.  
 9. ALL MANHOLE FRAME AND COVER ADJUSTMENTS SHALL BE INSTALLED WITH A MINIMUM 12" DIA. CONNECTION.  
 10. ALL MANHOLE FRAME AND COVER ADJUSTMENTS SHALL BE INSTALLED WITH A MINIMUM 12" DIA. MANHOLE.



**MODIFIED CARSON CITY UTILITIES SEWER GENERAL NOTES**  
 SECTION A-A  
 NOTES:  
 1. ALL MODIFIED CARSON CITY UTILITIES SEWER GENERAL NOTES SHALL BE INSTALLED AT A MINIMUM 18" DEPTH.  
 2. ALL MODIFIED CARSON CITY UTILITIES SEWER GENERAL NOTES SHALL BE INSTALLED WITH A MINIMUM 1% SLOPE.  
 3. ALL MODIFIED CARSON CITY UTILITIES SEWER GENERAL NOTES SHALL BE INSTALLED WITH A MINIMUM 12" COVER.  
 4. ALL MODIFIED CARSON CITY UTILITIES SEWER GENERAL NOTES SHALL BE INSTALLED WITH A MINIMUM 12" DIA. MANHOLE.  
 5. ALL MODIFIED CARSON CITY UTILITIES SEWER GENERAL NOTES SHALL BE INSTALLED WITH A MINIMUM 12" DIA. PIPE.  
 6. ALL MODIFIED CARSON CITY UTILITIES SEWER GENERAL NOTES SHALL BE INSTALLED WITH A MINIMUM 12" DIA. CONNECTION.  
 7. ALL MODIFIED CARSON CITY UTILITIES SEWER GENERAL NOTES SHALL BE INSTALLED WITH A MINIMUM 12" DIA. MANHOLE.  
 8. ALL MODIFIED CARSON CITY UTILITIES SEWER GENERAL NOTES SHALL BE INSTALLED WITH A MINIMUM 12" DIA. PIPE.  
 9. ALL MODIFIED CARSON CITY UTILITIES SEWER GENERAL NOTES SHALL BE INSTALLED WITH A MINIMUM 12" DIA. CONNECTION.  
 10. ALL MODIFIED CARSON CITY UTILITIES SEWER GENERAL NOTES SHALL BE INSTALLED WITH A MINIMUM 12" DIA. MANHOLE.



**MANHOLE TEMPORARY COVER TYPICAL SECTION**  
 SECTION A-A  
 NOTES:  
 1. ALL MANHOLE TEMPORARY COVER TYPICAL SECTIONS SHALL BE INSTALLED AT A MINIMUM 18" DEPTH.  
 2. ALL MANHOLE TEMPORARY COVER TYPICAL SECTIONS SHALL BE INSTALLED WITH A MINIMUM 1% SLOPE.  
 3. ALL MANHOLE TEMPORARY COVER TYPICAL SECTIONS SHALL BE INSTALLED WITH A MINIMUM 12" COVER.  
 4. ALL MANHOLE TEMPORARY COVER TYPICAL SECTIONS SHALL BE INSTALLED WITH A MINIMUM 12" DIA. MANHOLE.  
 5. ALL MANHOLE TEMPORARY COVER TYPICAL SECTIONS SHALL BE INSTALLED WITH A MINIMUM 12" DIA. PIPE.  
 6. ALL MANHOLE TEMPORARY COVER TYPICAL SECTIONS SHALL BE INSTALLED WITH A MINIMUM 12" DIA. CONNECTION.  
 7. ALL MANHOLE TEMPORARY COVER TYPICAL SECTIONS SHALL BE INSTALLED WITH A MINIMUM 12" DIA. MANHOLE.  
 8. ALL MANHOLE TEMPORARY COVER TYPICAL SECTIONS SHALL BE INSTALLED WITH A MINIMUM 12" DIA. PIPE.  
 9. ALL MANHOLE TEMPORARY COVER TYPICAL SECTIONS SHALL BE INSTALLED WITH A MINIMUM 12" DIA. CONNECTION.  
 10. ALL MANHOLE TEMPORARY COVER TYPICAL SECTIONS SHALL BE INSTALLED WITH A MINIMUM 12" DIA. MANHOLE.