



Community Development Department

108 E. Proctor Street
 Carson City, Nevada 89701
 (775) 887-2180 – Hearing Impaired: 711

MEMORANDUM

TO: Planning Commission

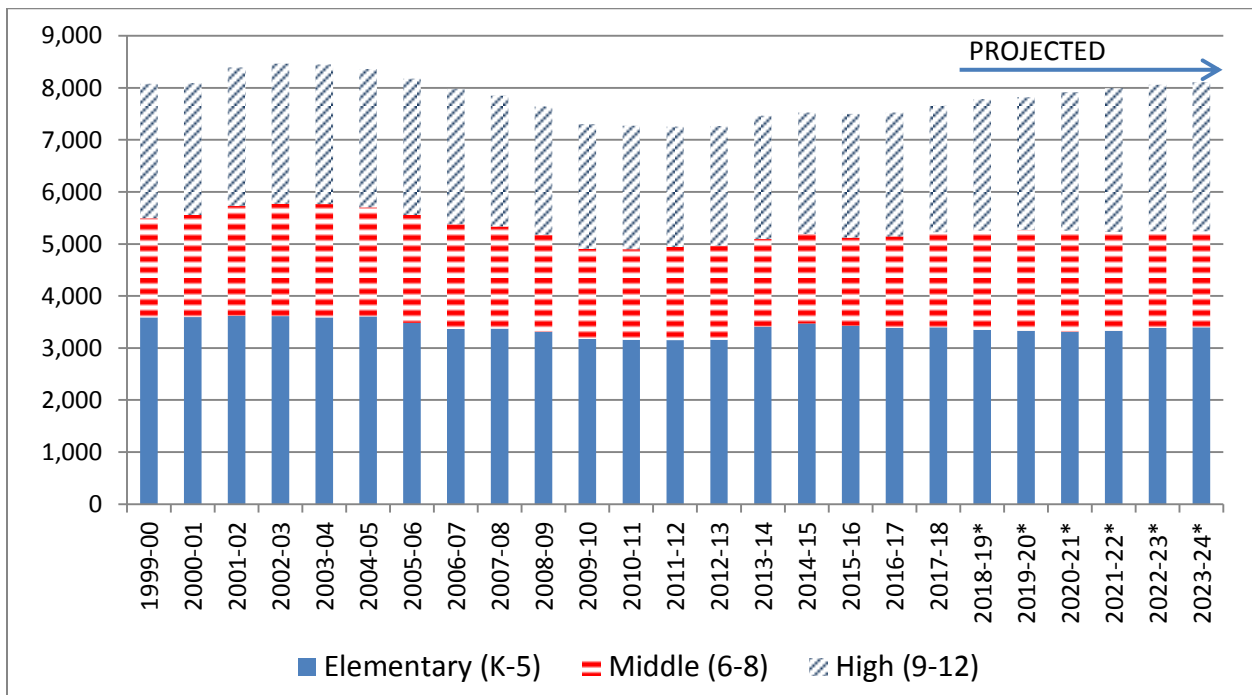
FROM: Lee Plemel, Community Development Director

DATE: May 25, 2018

SUBJECT: GM-18-071 – School District Comments – LATE MATERIAL ITEM 4.A

Attached are comments from the Carson City School District regarding the Growth Management item on the Planning Commission agenda for May 30, 2018.

The staff report submitted to the Planning Commission includes some information regarding historic school enrollment, including a chart. With updated information provided by the School District, staff noted that some of the values in the chart on page 9 of the staff report for high school enrollment are in error and do not match the data submitted by the school district. (Values for some years were too high in the chart in the staff report.) The following chart updates and expands on the chart in the staff report using the School District's data provided in the attached comments letter.

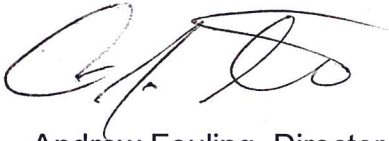


* Projected based on historical trends and 0.8% inflation factor for growth.

Source: Carson City School District

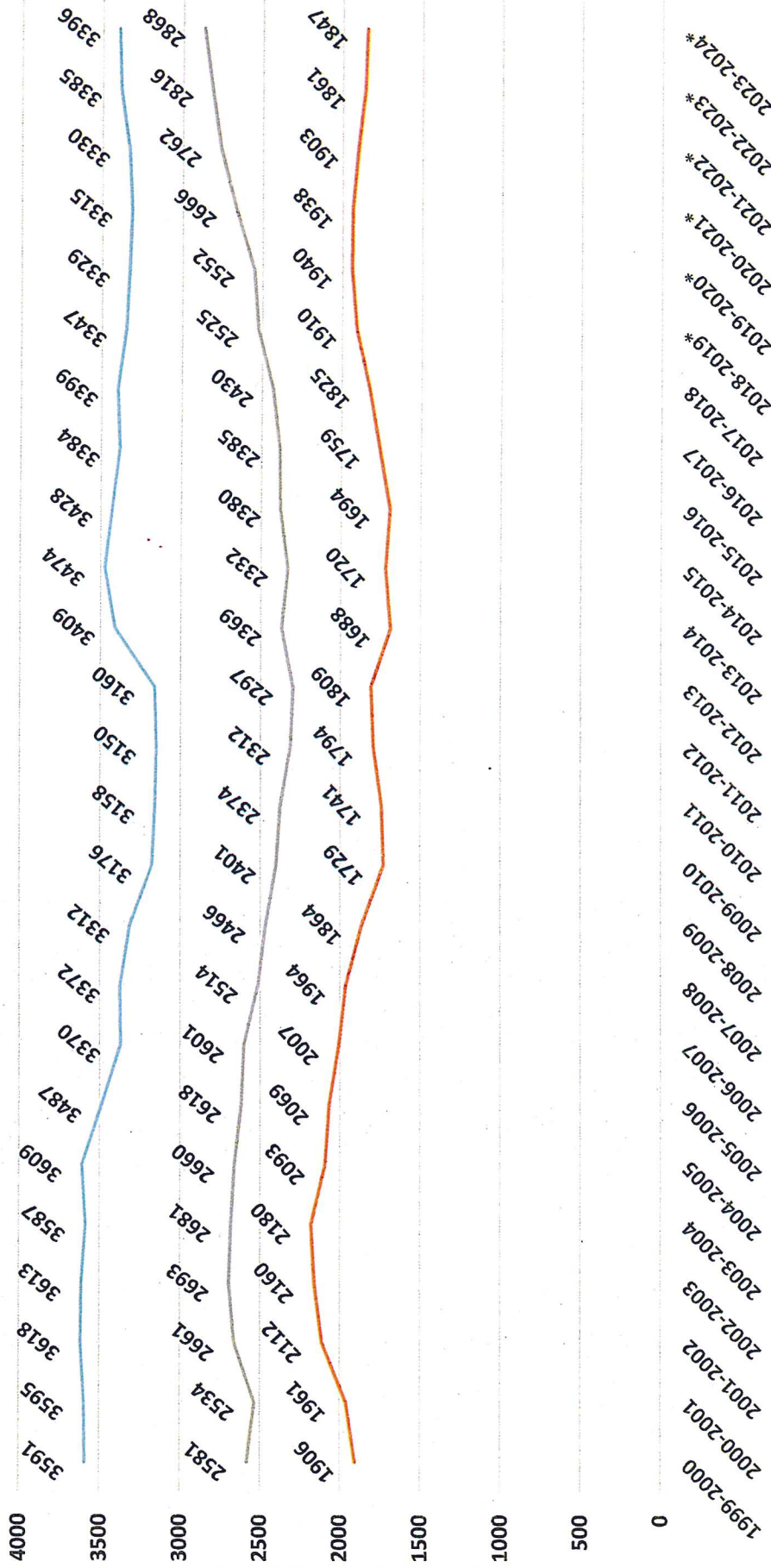
Again, Mr. Plemel, thank you to you and all involved in assuring Carson City's growth is manageable and sustainable.

Sincerely,

A handwritten signature in black ink, appearing to be 'A. Feuling', written in a cursive style.

Andrew Feuling, Director of Fiscal Services
Carson City School District

Carson City School District: Historical, Current & Projected Enrollment (Adjusted for Half-Day Kindergarten 1999-2013)



* Projected based on historical trends and 0.8% inflation factor for growth

— ES — MS — HS