

1. ALL STREET LINES AND LAYOUTS IN THE RIGHT-OF-WAY/ESSENTIAL SHALL BE P.A.C. UNLESS OTHERWISE NOTED.

2. MANHOLE AND LATERALS SHALL BE INSTALLED UNLESS OTHERWISE APPROVED BY CARSON CITY UTILITIES. NO FIELD MODIFICATIONS TO PRECAST BODIES SHALL BE ALLOWED.

3. NON-FLEXIBLE TRANSITION COUPLERS ARE REQUIRED WHEN CONNECTING SEWER LINES TO EXISTING LINES AND/OR FITTINGS.

4. THE CONTRACTOR SHALL INSTALL A BULK AT THE POINT OF INTERFERENCE OF A SEWER MAIN PRIOR TO THE START OF CONSTRUCTION. THE PLAN, SECTION, COUPLER AND BULK SHALL BE APPROVED BY THE CARSON CITY UTILITIES. THE CONTRACTOR SHALL BE RESPONSIBLE FOR THE DESIGN, MANUFACTURE, INSTALLATION AND MAINTENANCE OF THE BULK. THE CONTRACTOR SHALL BE RESPONSIBLE FOR THE DESIGN, MANUFACTURE, INSTALLATION AND MAINTENANCE OF THE BULK. THE CONTRACTOR SHALL BE RESPONSIBLE FOR THE DESIGN, MANUFACTURE, INSTALLATION AND MAINTENANCE OF THE BULK.

5. SEWER LINES SHALL BE TESTED PER SECTION 130.010 OF THE S.W.P.C. 135.020310 AND A DEPT. SECTION 130.010. THE CONTRACTOR SHALL BE RESPONSIBLE FOR THE DESIGN, MANUFACTURE, INSTALLATION AND MAINTENANCE OF THE BULK. THE CONTRACTOR SHALL BE RESPONSIBLE FOR THE DESIGN, MANUFACTURE, INSTALLATION AND MAINTENANCE OF THE BULK.

6. MARKING TAPES SHALL BE INSTALLED 12" ABOVE ALL SEWER MAINS AND LATERALS. THE MARKING TAPES SHALL BE THREE (3) HOURS' THICKNESS SHALL BE PRINTED ON BOTH SIDES. THE MARKING TAPES SHALL BE GREEN AND BEAT LANGE EQUIPMENT WORKING.

7. SEWER MANHOLE MANHOLES SHALL BE INSTALLED WITH SEWER MANHOLES AND LOCATED OFF THE PAVED SURFACE. SEWER MANHOLES SHALL BE 3'-0" WITH WOODEN DECK (600-100) OR MANHOLES (600-100) IMPROVED ON ASBESTOS CEMENT PIPE. THE MANHOLES SHALL BE INSTALLED ON ASBESTOS CEMENT PIPE. THE MANHOLES SHALL BE INSTALLED ON ASBESTOS CEMENT PIPE.



FOR INFORMATION ONLY
NOT FOR CONSTRUCTION

TYPICAL SEWER LINE & MANHOLE TRANSITION

SECTION 130.010 OF THE S.W.P.C. 135.020310 AND A DEPT. SECTION 130.010. THE CONTRACTOR SHALL BE RESPONSIBLE FOR THE DESIGN, MANUFACTURE, INSTALLATION AND MAINTENANCE OF THE BULK. THE CONTRACTOR SHALL BE RESPONSIBLE FOR THE DESIGN, MANUFACTURE, INSTALLATION AND MAINTENANCE OF THE BULK.

NDOT/CARSON CITY AGREEMENT PLANS

REVISIONS: 12/15/23 - 02/10/24 - 07/23/24 - 01/10/25 - 07/23/24 - 10/30/24

DATE: 10/30/24

BY: [Signature]

DESCRIPTION: [Blank]

MODIFIED

CARSON CITY UTILITIES
SEWER GENERAL NOTES

NO. REVISION DATE DESCRIPTION

1. 12/15/23 [Blank]

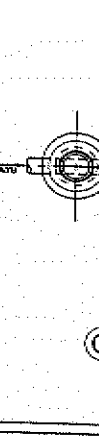
2. 02/10/24 [Blank]

3. 07/23/24 [Blank]

4. 01/10/25 [Blank]

5. 07/23/24 [Blank]

6. 10/30/24 [Blank]



GENERAL NOTES

- ALL LINES SHALL BE 12" UNLESS OTHERWISE NOTED.
- ALL LINES SHALL BE 12" UNLESS OTHERWISE NOTED.
- ALL LINES SHALL BE 12" UNLESS OTHERWISE NOTED.
- ALL LINES SHALL BE 12" UNLESS OTHERWISE NOTED.
- ALL LINES SHALL BE 12" UNLESS OTHERWISE NOTED.
- ALL LINES SHALL BE 12" UNLESS OTHERWISE NOTED.
- ALL LINES SHALL BE 12" UNLESS OTHERWISE NOTED.
- ALL LINES SHALL BE 12" UNLESS OTHERWISE NOTED.
- ALL LINES SHALL BE 12" UNLESS OTHERWISE NOTED.
- ALL LINES SHALL BE 12" UNLESS OTHERWISE NOTED.
- ALL LINES SHALL BE 12" UNLESS OTHERWISE NOTED.
- ALL LINES SHALL BE 12" UNLESS OTHERWISE NOTED.
- ALL LINES SHALL BE 12" UNLESS OTHERWISE NOTED.
- ALL LINES SHALL BE 12" UNLESS OTHERWISE NOTED.
- ALL LINES SHALL BE 12" UNLESS OTHERWISE NOTED.

PRELIMINARY

09/20/08

THE LOUIS BERGER
PUBLIC WORKS DEPARTMENT

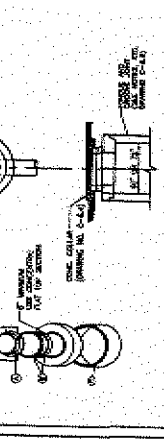
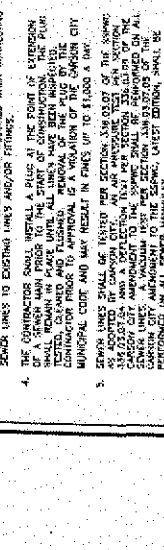
3000 SOUTH WEST CARSON CITY, NEVADA 89402

PH: 702-735-2112 FAX: 702-735-2112

DESIGNED BY: [Blank]

CHECKED BY: [Blank]

APPROVED BY: [Blank]



GENERAL NOTES

- ALL LINES SHALL BE 12" UNLESS OTHERWISE NOTED.
- ALL LINES SHALL BE 12" UNLESS OTHERWISE NOTED.
- ALL LINES SHALL BE 12" UNLESS OTHERWISE NOTED.
- ALL LINES SHALL BE 12" UNLESS OTHERWISE NOTED.
- ALL LINES SHALL BE 12" UNLESS OTHERWISE NOTED.
- ALL LINES SHALL BE 12" UNLESS OTHERWISE NOTED.
- ALL LINES SHALL BE 12" UNLESS OTHERWISE NOTED.
- ALL LINES SHALL BE 12" UNLESS OTHERWISE NOTED.
- ALL LINES SHALL BE 12" UNLESS OTHERWISE NOTED.
- ALL LINES SHALL BE 12" UNLESS OTHERWISE NOTED.
- ALL LINES SHALL BE 12" UNLESS OTHERWISE NOTED.
- ALL LINES SHALL BE 12" UNLESS OTHERWISE NOTED.
- ALL LINES SHALL BE 12" UNLESS OTHERWISE NOTED.
- ALL LINES SHALL BE 12" UNLESS OTHERWISE NOTED.

PRELIMINARY

09/20/08

THE LOUIS BERGER
PUBLIC WORKS DEPARTMENT

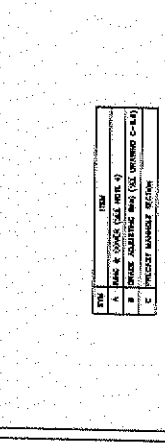
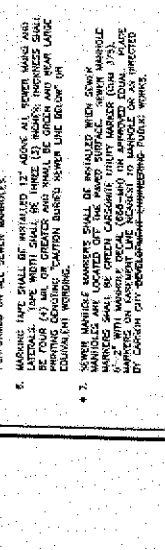
3000 SOUTH WEST CARSON CITY, NEVADA 89402

PH: 702-735-2112 FAX: 702-735-2112

DESIGNED BY: [Blank]

CHECKED BY: [Blank]

APPROVED BY: [Blank]



GENERAL NOTES

- ALL LINES SHALL BE 12" UNLESS OTHERWISE NOTED.
- ALL LINES SHALL BE 12" UNLESS OTHERWISE NOTED.
- ALL LINES SHALL BE 12" UNLESS OTHERWISE NOTED.
- ALL LINES SHALL BE 12" UNLESS OTHERWISE NOTED.
- ALL LINES SHALL BE 12" UNLESS OTHERWISE NOTED.
- ALL LINES SHALL BE 12" UNLESS OTHERWISE NOTED.
- ALL LINES SHALL BE 12" UNLESS OTHERWISE NOTED.
- ALL LINES SHALL BE 12" UNLESS OTHERWISE NOTED.
- ALL LINES SHALL BE 12" UNLESS OTHERWISE NOTED.
- ALL LINES SHALL BE 12" UNLESS OTHERWISE NOTED.
- ALL LINES SHALL BE 12" UNLESS OTHERWISE NOTED.
- ALL LINES SHALL BE 12" UNLESS OTHERWISE NOTED.
- ALL LINES SHALL BE 12" UNLESS OTHERWISE NOTED.
- ALL LINES SHALL BE 12" UNLESS OTHERWISE NOTED.

PRELIMINARY

09/20/08

THE LOUIS BERGER
PUBLIC WORKS DEPARTMENT

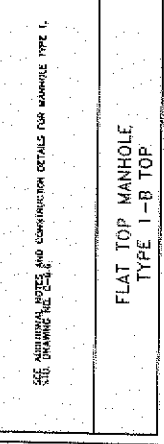
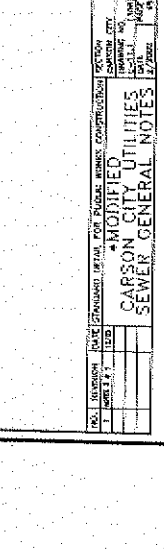
3000 SOUTH WEST CARSON CITY, NEVADA 89402

PH: 702-735-2112 FAX: 702-735-2112

DESIGNED BY: [Blank]

CHECKED BY: [Blank]

APPROVED BY: [Blank]



GENERAL NOTES

- ALL LINES SHALL BE 12" UNLESS OTHERWISE NOTED.
- ALL LINES SHALL BE 12" UNLESS OTHERWISE NOTED.
- ALL LINES SHALL BE 12" UNLESS OTHERWISE NOTED.
- ALL LINES SHALL BE 12" UNLESS OTHERWISE NOTED.
- ALL LINES SHALL BE 12" UNLESS OTHERWISE NOTED.
- ALL LINES SHALL BE 12" UNLESS OTHERWISE NOTED.
- ALL LINES SHALL BE 12" UNLESS OTHERWISE NOTED.
- ALL LINES SHALL BE 12" UNLESS OTHERWISE NOTED.
- ALL LINES SHALL BE 12" UNLESS OTHERWISE NOTED.
- ALL LINES SHALL BE 12" UNLESS OTHERWISE NOTED.
- ALL LINES SHALL BE 12" UNLESS OTHERWISE NOTED.
- ALL LINES SHALL BE 12" UNLESS OTHERWISE NOTED.
- ALL LINES SHALL BE 12" UNLESS OTHERWISE NOTED.
- ALL LINES SHALL BE 12" UNLESS OTHERWISE NOTED.

PRELIMINARY

09/20/08

THE LOUIS BERGER
PUBLIC WORKS DEPARTMENT

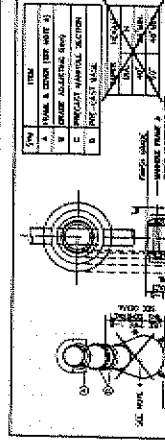
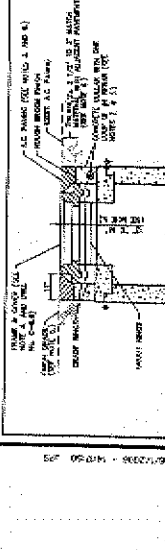
3000 SOUTH WEST CARSON CITY, NEVADA 89402

PH: 702-735-2112 FAX: 702-735-2112

DESIGNED BY: [Blank]

CHECKED BY: [Blank]

APPROVED BY: [Blank]



GENERAL NOTES

- ALL LINES SHALL BE 12" UNLESS OTHERWISE NOTED.
- ALL LINES SHALL BE 12" UNLESS OTHERWISE NOTED.
- ALL LINES SHALL BE 12" UNLESS OTHERWISE NOTED.
- ALL LINES SHALL BE 12" UNLESS OTHERWISE NOTED.
- ALL LINES SHALL BE 12" UNLESS OTHERWISE NOTED.
- ALL LINES SHALL BE 12" UNLESS OTHERWISE NOTED.
- ALL LINES SHALL BE 12" UNLESS OTHERWISE NOTED.
- ALL LINES SHALL BE 12" UNLESS OTHERWISE NOTED.
- ALL LINES SHALL BE 12" UNLESS OTHERWISE NOTED.
- ALL LINES SHALL BE 12" UNLESS OTHERWISE NOTED.
- ALL LINES SHALL BE 12" UNLESS OTHERWISE NOTED.
- ALL LINES SHALL BE 12" UNLESS OTHERWISE NOTED.
- ALL LINES SHALL BE 12" UNLESS OTHERWISE NOTED.
- ALL LINES SHALL BE 12" UNLESS OTHERWISE NOTED.

PRELIMINARY

09/20/08

THE LOUIS BERGER
PUBLIC WORKS DEPARTMENT

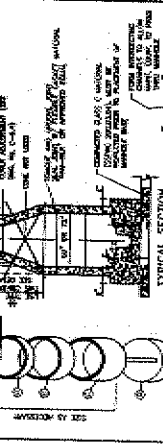
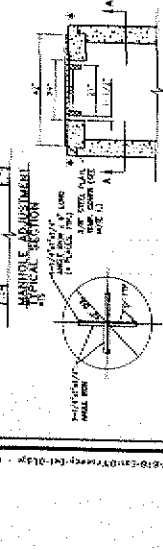
3000 SOUTH WEST CARSON CITY, NEVADA 89402

PH: 702-735-2112 FAX: 702-735-2112

DESIGNED BY: [Blank]

CHECKED BY: [Blank]

APPROVED BY: [Blank]



GENERAL NOTES

- ALL LINES SHALL BE 12" UNLESS OTHERWISE NOTED.
- ALL LINES SHALL BE 12" UNLESS OTHERWISE NOTED.
- ALL LINES SHALL BE 12" UNLESS OTHERWISE NOTED.
- ALL LINES SHALL BE 12" UNLESS OTHERWISE NOTED.
- ALL LINES SHALL BE 12" UNLESS OTHERWISE NOTED.
- ALL LINES SHALL BE 12" UNLESS OTHERWISE NOTED.
- ALL LINES SHALL BE 12" UNLESS OTHERWISE NOTED.
- ALL LINES SHALL BE 12" UNLESS OTHERWISE NOTED.
- ALL LINES SHALL BE 12" UNLESS OTHERWISE NOTED.
- ALL LINES SHALL BE 12" UNLESS OTHERWISE NOTED.
- ALL LINES SHALL BE 12" UNLESS OTHERWISE NOTED.
- ALL LINES SHALL BE 12" UNLESS OTHERWISE NOTED.
- ALL LINES SHALL BE 12" UNLESS OTHERWISE NOTED.
- ALL LINES SHALL BE 12" UNLESS OTHERWISE NOTED.

PRELIMINARY

09/20/08

THE LOUIS BERGER
PUBLIC WORKS DEPARTMENT

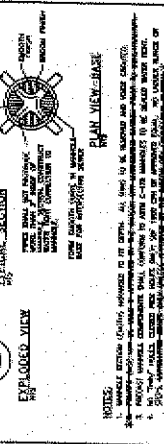
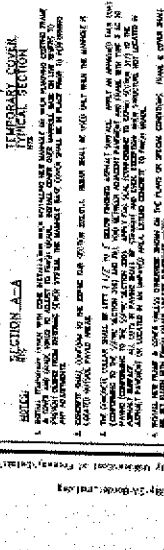
3000 SOUTH WEST CARSON CITY, NEVADA 89402

PH: 702-735-2112 FAX: 702-735-2112

DESIGNED BY: [Blank]

CHECKED BY: [Blank]

APPROVED BY: [Blank]



GENERAL NOTES

- ALL LINES SHALL BE 12" UNLESS OTHERWISE NOTED.
- ALL LINES SHALL BE 12" UNLESS OTHERWISE NOTED.
- ALL LINES SHALL BE 12" UNLESS OTHERWISE NOTED.
- ALL LINES SHALL BE 12" UNLESS OTHERWISE NOTED.
- ALL LINES SHALL BE 12" UNLESS OTHERWISE NOTED.
- ALL LINES SHALL BE 12" UNLESS OTHERWISE NOTED.
- ALL LINES SHALL BE 12" UNLESS OTHERWISE NOTED.
- ALL LINES SHALL BE 12" UNLESS OTHERWISE NOTED.
- ALL LINES SHALL BE 12" UNLESS OTHERWISE NOTED.
- ALL LINES SHALL BE 12" UNLESS OTHERWISE NOTED.
- ALL LINES SHALL BE 12" UNLESS OTHERWISE NOTED.
- ALL LINES SHALL BE 12" UNLESS OTHERWISE NOTED.
- ALL LINES SHALL BE 12" UNLESS OTHERWISE NOTED.
- ALL LINES SHALL BE 12" UNLESS OTHERWISE NOTED.

PRELIMINARY

09/20/08

THE LOUIS BERGER
PUBLIC WORKS DEPARTMENT

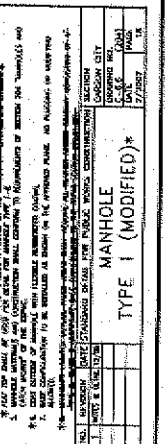
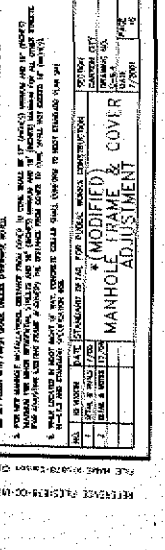
3000 SOUTH WEST CARSON CITY, NEVADA 89402

PH: 702-735-2112 FAX: 702-735-2112

DESIGNED BY: [Blank]

CHECKED BY: [Blank]

APPROVED BY: [Blank]



GENERAL NOTES

- ALL LINES SHALL BE 12" UNLESS OTHERWISE NOTED.
- ALL LINES SHALL BE 12" UNLESS OTHERWISE NOTED.
- ALL LINES SHALL BE 12" UNLESS OTHERWISE NOTED.
- ALL LINES SHALL BE 12" UNLESS OTHERWISE NOTED.
- ALL LINES SHALL BE 12" UNLESS OTHERWISE NOTED.
- ALL LINES SHALL BE 12" UNLESS OTHERWISE NOTED.
- ALL LINES SHALL BE 12" UNLESS OTHERWISE NOTED.
- ALL LINES SHALL BE 12" UNLESS OTHERWISE NOTED.
- ALL LINES SHALL BE 12" UNLESS OTHERWISE NOTED.
- ALL LINES SHALL BE 12" UNLESS OTHERWISE NOTED.
- ALL LINES SHALL BE 12" UNLESS OTHERWISE NOTED.
- ALL LINES SHALL BE 12" UNLESS OTHERWISE NOTED.
- ALL LINES SHALL BE 12" UNLESS OTHERWISE NOTED.
- ALL LINES SHALL BE 12" UNLESS OTHERWISE NOTED.

PRELIMINARY

09/20/08

THE LOUIS BERGER
PUBLIC WORKS DEPARTMENT

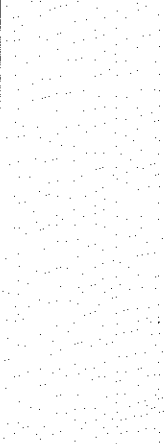
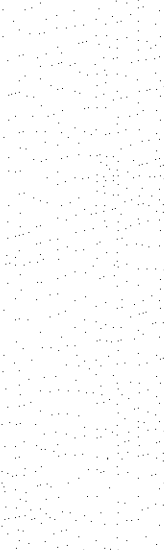
3000 SOUTH WEST CARSON CITY, NEVADA 89402

PH: 702-735-2112 FAX: 702-735-2112

DESIGNED BY: [Blank]

CHECKED BY: [Blank]

APPROVED BY: [Blank]



GENERAL NOTES

- ALL LINES SHALL BE 12" UNLESS OTHERWISE NOTED.
- ALL LINES SHALL BE 12" UNLESS OTHERWISE NOTED.
- ALL LINES SHALL BE 12" UNLESS OTHERWISE NOTED.
- ALL LINES SHALL BE 12" UNLESS OTHERWISE NOTED.
- ALL LINES SHALL BE 12" UNLESS OTHERWISE NOTED.
- ALL LINES SHALL BE 12" UNLESS OTHERWISE NOTED.
- ALL LINES SHALL BE 12" UNLESS OTHERWISE NOTED.
- ALL LINES SHALL BE 12" UNLESS OTHERWISE NOTED.
- ALL LINES SHALL BE 12" UNLESS OTHERWISE NOTED.
- ALL LINES SHALL BE 12" UNLESS OTHERWISE NOTED.
- ALL LINES SHALL BE 12" UNLESS OTHERWISE NOTED.
- ALL LINES SHALL BE 12" UNLESS OTHERWISE NOTED.
- ALL LINES SHALL BE 12" UNLESS OTHERWISE NOTED.
- ALL LINES SHALL BE 12" UNLESS OTHERWISE NOTED.

PRELIMINARY

09/20/08

THE LOUIS BERGER
PUBLIC WORKS DEPARTMENT

3000 SOUTH WEST CARSON CITY, NEVADA 89402

PH: 702-735-2112 FAX: 702-735-2112

DESIGNED BY: [Blank]

CHECKED BY: [Blank]

APPROVED BY: [Blank]