















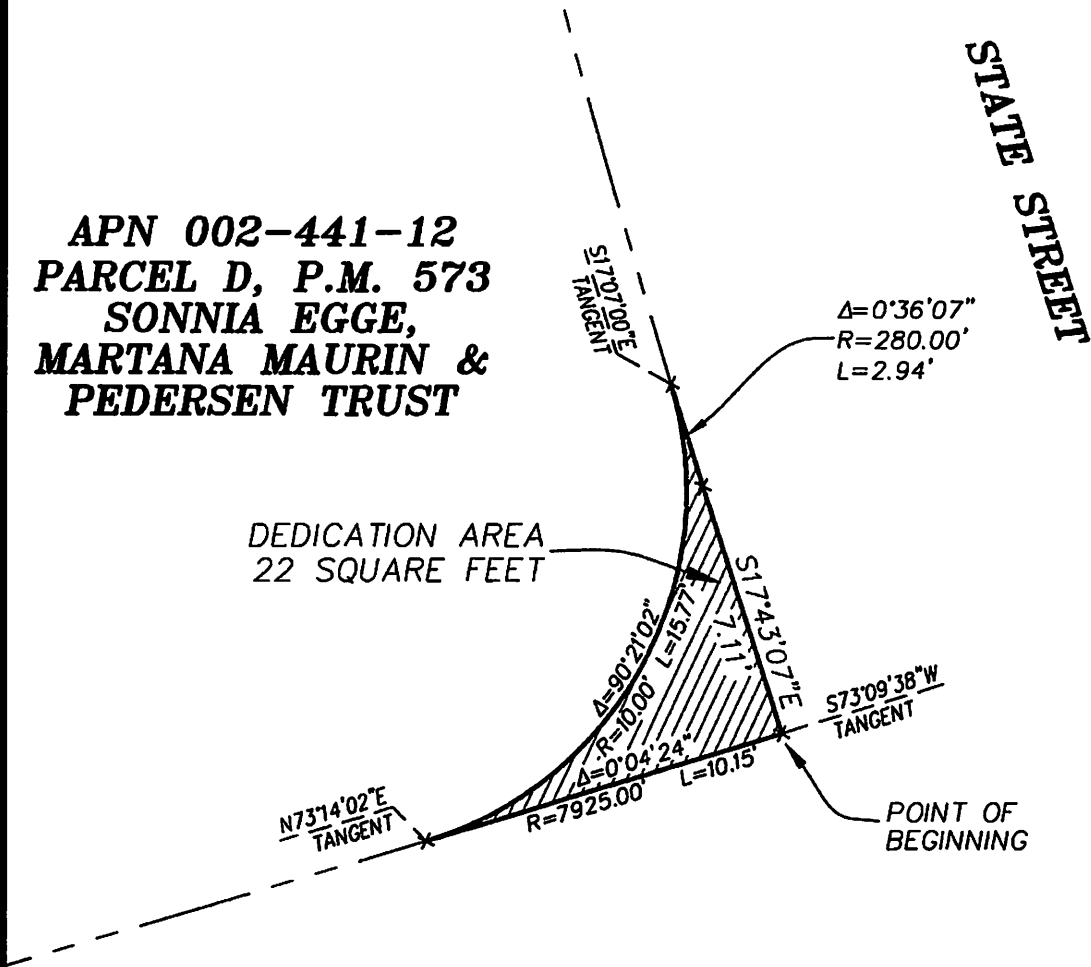




**EXHIBIT A-1**  
 PLAT TO ACCOMPANY  
 DESCRIPTION

DEDICATION AREA  
 APN 002-441-12  
 PORTION OF THE NE 1/4 OF SECTION 17  
 T. 15 N., R. 20 E., M.D.M.  
 CARSON CITY NEVADA

APN 002-441-12  
 PARCEL D, P.M. 573  
 SONNIA EGGE,  
 MARTANA MAURIN &  
 PEDERSEN TRUST



**WOOD RODGERS**  
 DEVELOPING INNOVATIVE DESIGN SOLUTIONS

SHEET 1 OF 1  
 JOB NO. 3146.002

SCALE: 1" = 5'

5440 Reno Corporate Drive  
 Reno, NV 89511

Tel 775.823.4068  
 Fax 775.823.4066